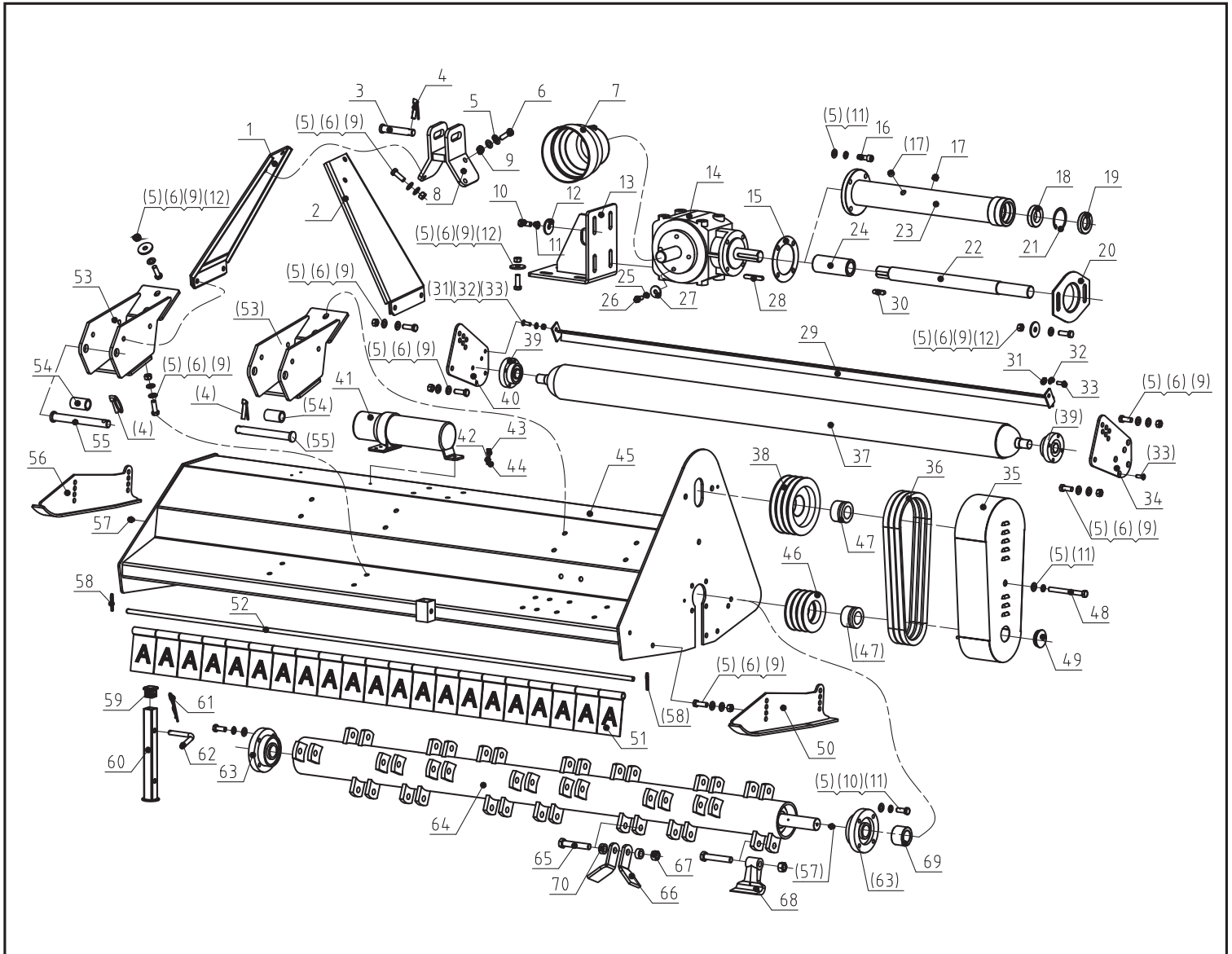


# ASSEMBLY DRAWING & PARTS LIST



## KM PART LIST

Ser.No.	Part No.	Name & Specification	Quantity
1	KM175.022	Right hanging plate weldment	1
2	KM175.021	Left hanging plate weldment	1
3	KM175.116	Upper pin	1
4	MT001	Lock pin Ø11	3
5	GB/T 97.1-86	Plain washer 12	56
6	GB/T 5783-86	Bolt M12*35	28
7		PTO shielding	1
8	KM175.020	Hanging upper weldment	1
9	GB/T 6184-86	Lock nut M12	28
10	GB/T 5783-86	Bolt M12*30	12

## KM PART LIST

Ser.No.	Part No.	Name & Specification	Quantity
11	GB/T 93-86	Spring lock washer 12	12
12	GB/T 96.2-86	Big Plain washer 12	12
13	KM175.025	Gearbox mounting plate weldment	1
14	XH50-300Z-02W	Gearbox assembly	1
15	KM175.118	Paper pad	1
16	GB/T 70.1-86	Hex cylinder head screw M12*35	4
17	ZBT32001.387	Allen tapered plug ZG3/8-19	2
18	GB/T276	Deep groove ball bearing 6007	1
19	GB/T 9877.3	Oil seal 35*62*10	1
20	KM175.101-1	Connection plate	1
21	GB/T 893.2-86	Hole ring 62	1
22	KM175.104	Shaft	1
23	KM175.015	Shaft tube weldment	1
24	KM175.205	Coupling	1
25	GB/T 93-86	Spring lock washer 10	4
26	GB/T 5783-86	Bolt M10*20	4
27	GB/T 96.2-86	Big Plain washer 10	4
28	GB/T 1095	Key 10*65	1
29	KM175.016	Scraping clay weldment	1
30	GB/T 1095	Key 10*40	1
31	GB/T 6184-86	Lock nut M8	2
32	GB/T 97.1-86	Plain washer 8	2
33	GB/T 70.3	Hex head screws M8*25	10
34	KM175.111	Drum connection plate (Left)	1
35	KM175.014	Pulley cover	1
36	GB/T1154-97	Belt 17*1016	3
37	KM175.012	Roller weldment	1
38	KM175.106	Big pulley	1
39	UC205-Z	UC205-Z bearing block with oilcup	2
40	KM175.112	Drum connection plate (Right)	1
41		Specification box	1
42	GB/T 93-86	Spring lock washer 6	3
43	GB/T 5783-86	Bolt M6*20	3
44	GB/T 97.1-86	Plain washer 6	3
45	KM175.011	Hood weldment	1
46	EFGC175.107	Small pulley	1
47	JB/T 7934	Power lock 35*60	2
48		Bolt M12x120	1
49		Rubber cover	1
50	KM175.019	Right plate weldment	1

## KM PART LIST

Ser.No.	Part No.	Name & Specification	Quantity
51	KM175.108/109	Defence (current/adjusted)	n
52	KM175.110	Defence axle	1
53	KM175.017	Suspension connection plate weldment	2
54	KM175.114	Pipe sleeve	2
55	KM175.117	Lower pin	2
56	KM175.018	Left plate weldment	1
57		Oil cup M8*1	2
58	GB/T91-2000	Cotter pin Ø3.5	2
59	KM175.122	Pipe plug 31*31	1
60	KM175.023	Support weldment	1
61		R pin Ø3.5	1
62	EFGC175.115	L pin	1
63	UC207-Z	UC207-Z bearing block with oilcup	2
64	KM175.013	Knife shaft weldment	1
65	GB/T 5783-86	Hex cylinder head screw	N
66	KM175.121	Y blade (selection fitting)	2N
67	GB/T 6184-86	Lock nut M16	N
68	KM175.120	Hoe blade (selection fitting) □	N
69	KM175.103	Bushing	2N
70	KM175.102	Blade spacer	